



Beekeeper's Checklist

SECOND EDITION



ecrotek

One Source for Beekeepers

0800 11 77 66 | ecrotek.co.nz

New to *beekeeping*?



IS BEEKEEPING FOR ME?

Thinking of keeping bees? They are probably more work than a goldfish but less than a dog, so you need to do your research and consider some key factors before you go out and buy a hive.

In the Summer months, your hives may need a lot of attention. They must have room to expand for plenty of honey stores, and hive health must also be maintained. In Winter it will be less intensive, as this is the bees time to take a well-deserved holiday. However, they will need feeding!

ALLERGIES

No matter how careful you are, you are bound to get stung at least once in your beekeeping life. For most people the reaction shouldn't be too severe; maybe some localised swelling, or redness and itchiness. However, some people can have severe reactions, called Anaphylaxis. These should be treated seriously, with urgent medical attention. If you know that you or anyone around you (neighbours, friends or other family members) may have a severe anaphylactic reaction to bee stings, then we recommend you have the right equipment on hand e.g. an Epipen (adrenaline injection) is carried with you and that you are comfortable with dealing with this type of emergency. For more information check out: www.health.govt.nz/your-health/conditions-and-treatments/accidents-and-injuries/bites-and-stings/bee-and-wasp-stings



REGISTERING (Legal requirements)

While you don't need a "licence", you are legally required to register your hives. ContactASURE Quality or the NAFBPMISA for registration forms, or for more information visit: www.afb.org.nz/forms

Also, check with your local council, as there can be different restrictions depending on local bylaws.

BEE CLUBS

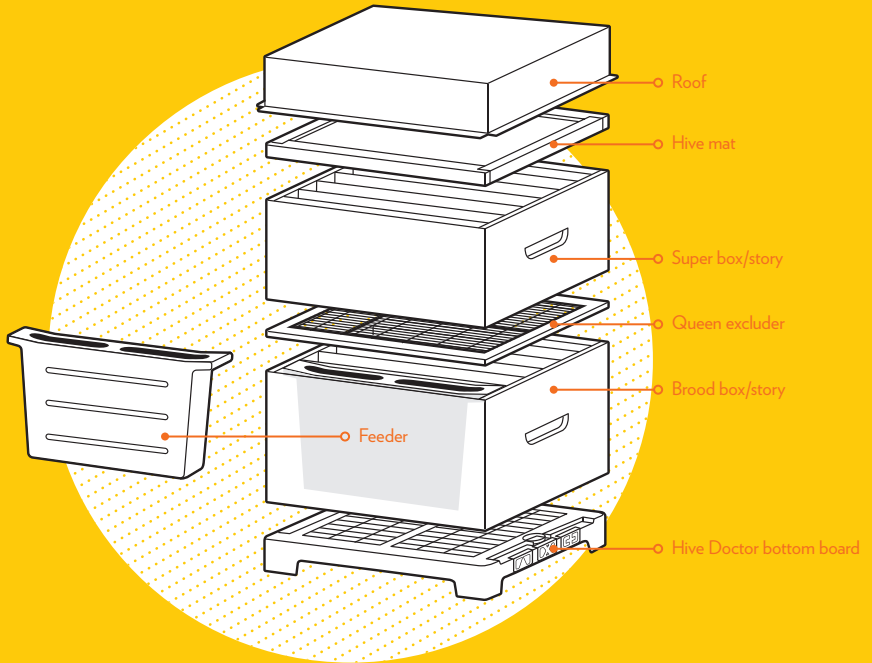
Your local beekeeping club is a great place to start. It is a chance for you to get involved, and see what beekeeping is all about before making the commitment. You can also pick up handy tips from the experts. Most clubs hold regular meetings, which include current discussions and practical sessions (weather permitting) to help new and old beekeepers alike. There are clubs all around New Zealand. See the back pages of this booklet to find a club near you.

WHEN TO START?

Spring is the ideal time to start. This is usually the start of the season, and it means your bees will need attentive management from the moment you get them. It also lets your bees build in size and strength before the honey flow begins. Keep in mind however that if you are starting out with a nuc (small bee colony) then surplus honey might not be produced until the following season.

Your local beekeeping club is a great place to start... get involved, and see what beekeeping is all about

The essentials checklist



SUGGESTED EQUIPMENT

The checklist below gives you a list of suggested equipment that is needed.

- Smoker
- Hive tool
- Gloves
- Suit
- Brush
- Varroa control
- Storeys/boxes
- Frames
- Bottom board
- Hive mat
- Roof
- Queen excluder
- Feeder

VARROA TREATMENT CALENDAR

Spring

Autumn

Spring

Autumn

QUICK TIPS

Prepare for Spring in the winter. Place your order and collect any gear you need in the Winter so that when the new season begins you'll be ready to go.

Bee health



VARROA MITE (*Varroa destructor*)

Varroa is an external parasite of honey bees. The Varroa bee mite reduces the number of bees in managed hives as well as feral or wild colonies.

Varroa is widely distributed throughout New Zealand.

Beekeepers in affected areas should monitor the mite levels within their hives and treat before numbers rise to damaging levels. Varroa cannot be eradicated, but can be controlled using various organic and inorganic miticides.

Adult female mites are fairly large about 1.1 x 1.6mm. They have a hard reddish to dark brown body that is flattened and oval in shape.

Visual examination of adult bees is not an effective way to monitor for Varroa. However, infested hives may show the following signs:

- Unexpectedly low bee numbers
- A patchy brood pattern
- Small reddish-brown mites on the bodies of bees, and on uncapped drone or worker pupae
- Crawling bees near the hive entrance, often with damaged wings or no wings
- Sudden population crashes, especially in the Autumn when hives may have honey stores but no bees.

TABLE 1: COMPARISON BETWEEN BAYVAROL, MITE-AWAY AND THYMOVAR TREATMENTS*

NAME	ACTIVE INGREDIENT	CHEMICAL CLASS	APPLICATION TYPE	VISITS REQUIRED	WEEKS OF TREATMENT	% VARROA KILLED
Bayvarol	Flumethrin	Synthetic Pyrethroid	Plastic Strip	2	8	95-100
Mite-Away Quick Strips+	Formic Acid	Organic Acid	Polysaccharide Gel Strip	1	1	83-97
Thymovar	Thymol	Essential Oil	Wafer	2	3-4	85-100

*Govtnz. (2016). Govtnz. Retrieved 25 July, 2016, from <http://www.biosecurity.govt.nz/pests/varroa> Retrieved 25 July, 2016, from www.biosecurity.govt.nz/pests/varroa

Beekeeping *clubs*

NORTH ISLAND

Far North Beekeepers Club

Meet every third Monday monthly at 5.30pm at 24-26 Matthews Ave, Kaitaia

P: +64 21 0821 5217

Kerikeri Beekeeping Club

P: +64 9 407 7641

E: bees@outdoorkiwi.co.nz

Whangarei Bee Club

Meets first Saturday of every month at 10am at Whareora Hall, Pataua North Road, Whangarei.

E: wbccommunication@gmail.com

W: www.whangareibeeclub.co.nz

Waipu Beekeepers Club

Meets second Tuesday of every month at 5.30pm at Waipu Boating & Fishing Club, Nova Scotia Drive, Waipu.

P: +64 21 216 6152

Warkworth Beekeepers Society Inc

Meets the first Wednesday of each month from 7:15pm to 9:30pm.

P: +64 21 073 6281

E: ww.beekeepers.soc@gmail.com

Auckland Beekeepers Club

Meets second Saturday monthly at Unitec, Pt Chevalier, Auckland.

P: +64 9 410 7445

E: admin@aucklandbeekeepersclub.org.nz

W: www.aucklandbeekeepersclub.org.nz

Rodney Beekeepers Club

Meets second Wednesday of every month 7.30pm at 72 Mill Rd, Helensville.

E: ContactRodneyBeekeepers@gmail.com

W: www.rodneeybeekeepersclub.co.nz

Franklin Beekeeping Club

Meets second Sunday each month at 10am at 733 Paerata Rd, near Pukekohe.

E: contact@franklinbees.co.nz

W: www.franklinbees.co.nz

Waikato Domestic Beekeeping Club

Meets every third Thursday of the month (except January) at 7.30pm at Chartwell Co-operating Church Hall, 124 Comries Road, Hamilton.

E: president@waikatobeekeepers.org.nz

W: www.waikatobeekeepers.org.nz

Bay of Plenty Bee Interest Group

Meets last Sunday each month at different venues.

E: bopbeekeepers@gmail.com

P: +64 22 601 0447 (Judy)

Rotorua Honey Bee Club

Meets monthly generally at 2pm on a Sunday.

E: rotoruahoneybeeclub@gmail.com

W: www.rotoruahoneybeeclub.co.nz

Owhango Beekeepers Club

Meets second Tuesday each month at 7.30pm in local community hall between September and March.

W: www.owhangobeekeepersclub.co.nz

Beekeeping clubs (Continued)

Ruapehu Beekeepers Club

Meets second Monday every month at 7pm in the Woodwork Rooms at Ruapehu College, 30 Tainui St, Ohakune

Taranaki Beekeeping Club

Meets third Monday every month at 7pm at West Baptist Church Hall, 144 South Road, Spotswood, New Plymouth

E: taranakibeekeepers@gmail.com
F: www.facebook.com/TaranakiBeekeepersClub

Wanganui Beekeepers Club

Meets every second Wednesday each month (except January), at 7.30pm at Canaan Apiaries, Mosston Road, Wanganui.

Neil Farrer
P: +64 6 343 6248
E: nfarrer@xtra.co.nz

Manawatu Beekeeping Club

Meets every fourth Thursday of the month at 7.30pm Newbury Hall, SH3, Palmerston North

P: +64 6 329 1929
E: info@manawatubeeclub.org.nz
W: www.manawatubeeclub.org.nz

The Buzz Club Otaki

Meets every third Wednesday of the month at 7pm at the Waitohu School Hall, Te Manuao Road, Otaki.

E: thebuzzclubotaki@gmail.com

Wairarapa Hobby Beekeepers Club

Meets every second Sunday of each month (except January) at 2pm.

E: wairarapahobbybeekeepersclub@gmail.com
F: www.facebook.com/Wairarapa.Beekeepers

Wellington Beekeeping Association

Meets first Wednesday of the month (except January) in the Johnsonville Community Centre, Main Hall, Moorefield Road, Johnsonville.
7pm Beginner's session, 7.30pm main meeting.

P: +64 4 478 3367
E: lindsays.apiaries@clearnet.nz
W: www.beehive.org.nz

SOUTH ISLAND

Marlborough Beekeeping Association

Meets the first Saturday of the month at 10am at the Blenheim community gardens off Budge Street.

P: +64 21 268 4149
E: info@marlboroughbeekeepers.co.nz
W: www.marlboroughbeekeepers.co.nz

West Coast Hobby Beekeeping Club

Meets at Kumara Junction Café/Honey House from 10am to 12pm.

E: westcoasthobbybeekeepers@gmail.com
P: +64 3 755 5441

Beekeeping clubs (Continued)

Nelson Beekeepers Club

Meets first Tuesday February-December inclusive,
7-9pm. Waimea Lounge, Richmond A&P
Showgrounds, Lower Queen Street, Richmond.

E: tasmanbees@gmail.com

W: www.nelsonbeekeepers.org.nz

North Canterbury Beekeeping Club

Meets second Sunday August - April inclusive,
10.30am newbies, 1.30pm for everyone at 176 Giles
Road, Clarkville.

E: president@ncbeeclub.org.nz

W: www.ncbeeclub.org.nz

Christchurch Hobbyist Beekeepers' Club

Meets on the first Saturday of each month,
August - May, except January when it's the second
Saturday, at 681 Cashmere Road, at 1.30pm.

E: chch.beekeepers@gmail.com

W: www.chchbeekeepers.org.nz

Dunedin Beekeepers Club

Meets second Saturday of the month during the
season at 1.30pm at Malcam Trust rooms, 45 Maori
Road, Bellknoves.

P: +64 27 245 6427

E: President@DunedinBeekeepersClub.org

W: www.dunedinbeekeepersclub.org

Southland Bee Society

Meets every third Wednesday of the month.
For meeting details, go to our website.

P: +64 27 721 1448

E: info@southlandbeesociety.nz

W: www.southlandbeesociety.nz

NATIONAL BODIES

—

APINZ Regional Hubs

www.apinz.co.nz

UMF Honey Association (Inc)

www.umf.org.nz

—

PO Box 19348, Hamilton

John Rawcliffe, Administrator

P: +64 9 575 3127

M: +64 27 441 8508

E: enquiry@umf.org.nz

MPI - Ministry for Primary Industries

www.mpi.govt.nz

NZ Honey Bee Pollination

Association & NZ Queen Producers Association

Russell Berry

P: +64 7 366 6111

NZ Honey Packers and Exporters

Association Inc

Allen McCaw

P: +64 3 417 7198

E: amccaw@clear.net.nz

Mary-Anne Thomason

P: +64 6 855 8038

E: nzhp.secretary@xtra.co.nz

Bee Products Standards Council

Dr Jim Edwards Chairman

P: +64 6 362 6301

E: jim@worldveterinaryconsultants.com

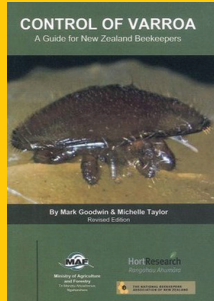
Keen to *learn more?*

FURTHER READING

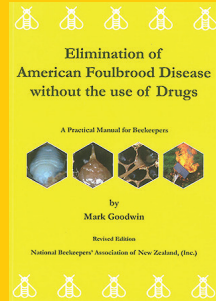
Our recommendations.



Practical Beekeeping in New Zealand 4th Edition
by Andrew Matheson and Murray Reid.



Control of Varroa
Mark Goodwin and Michelle Taylor.



Elimination of American Foulbrood Disease without the use of Drugs
by Mark Goodwin.



SOCIAL MEDIA
[facebook.com/ecrotek](https://www.facebook.com/ecrotek)
[instagram.com/ecrotek](https://www.instagram.com/ecrotek)
ecrotek.co.nz

P. 0800 11 77 66
W. ecrotek.co.nz
E. info@ecrotek.co.nz

North Island
15e Kerwyn Ave, East Tamaki,
Auckland 2013

South Island
6a Sheffield Cres, Burnside
Christchurch 8542